

Installation Guide

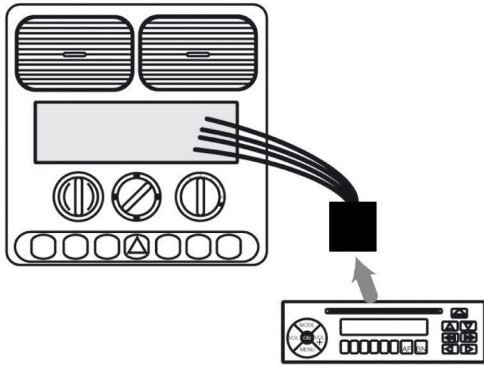
Steering wheel control Interface



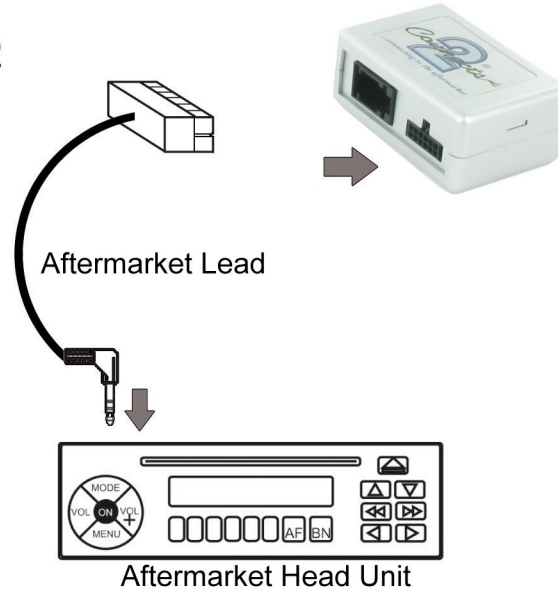
CTSFO005 -
Ford Fiesta 2010>



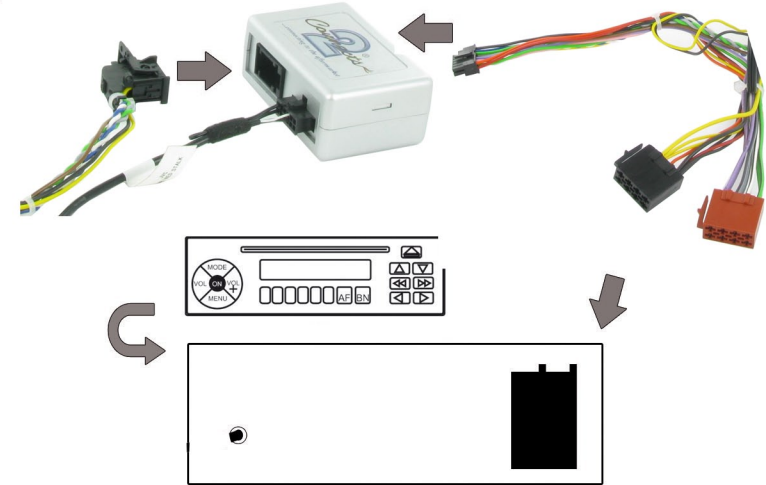
1 Remove Original Head Unit



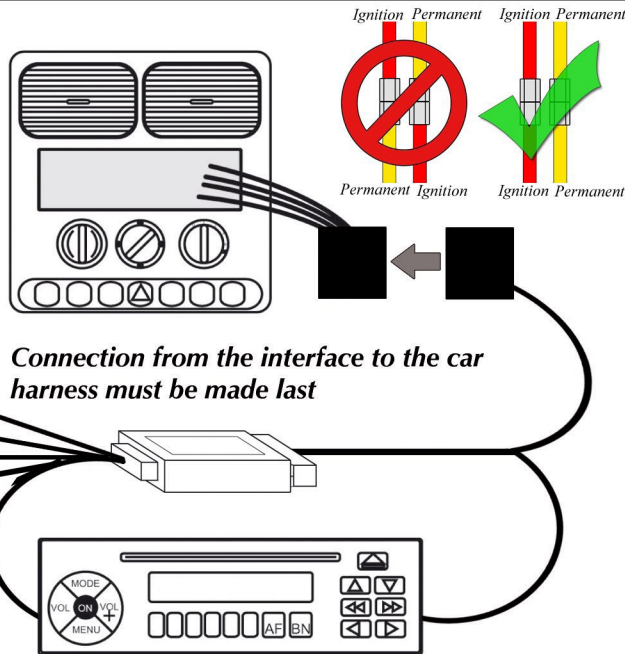
2



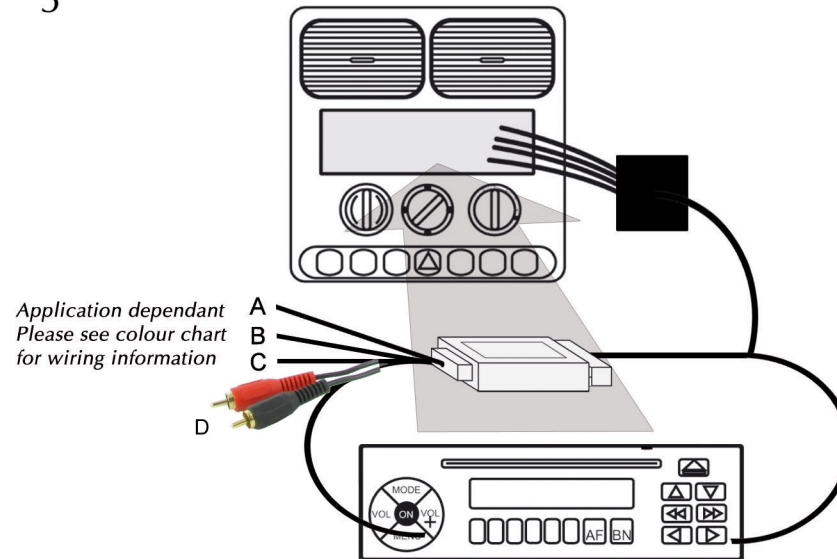
3



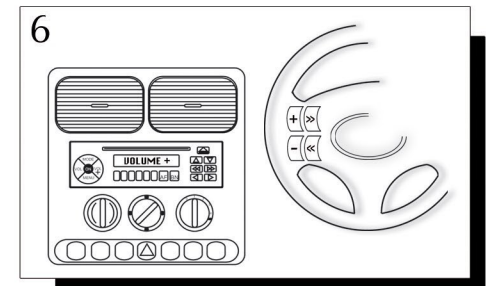
4



5



6



- | | |
|-----------------------|--|
| A - Pink Wire | = Speed Pulse |
| B - Green Wire | = Park Brake |
| C - Purple/White Wire | = Reverse |
| D - RCA Leads | = Connect to aftermarket head unit aux in to retain factory aux plug |